

**newera
uranium**
LIMITED

Investor Presentation - November 2007

Major developments within next 12 months





Newera Uranium Ltd (ASX: NRU)

Newera Uranium (ASX: NRU) - a uranium exploration company aiming to capitalise on the strong global demand for Uranium.

- ASX listed June 2006
- 4 well advanced prospects have the potential for significant size and grade and if proven, could provide the scale for NRU to become a major producer. Plus 2 advanced and 2 grass roots prospects
- NRU has the assets, resources and technical skills to progress the projects towards a commercial outcome
- 3 major drilling programs ready + 2 in planning for next 12 months



Management Team

Chairman & Managing Director: Mr Martin Blakeman BEc
22 years experience at Board level in junior resource companies

Non Executive Director: Mr Greg Miles BSc, GDip (Geol), MAIG
Geologist with 13 years experience in mineral exploration

Non Executive Director & Co Sec: Mr Winton Willesee BBus,
DipEd, PGDipBus, MCom, FFin, CPA, MAICD
Broad experience in the administration of ASX listed companies



Capital Structure & Cash

Market Cap: ~\$8 million (at 18c)

Fully Paid Shares on issue: 45,316,146

Options: (as per table)

Number	Quoted	Exercise Price	Expiry
4,000,000	Nil	\$0.25	31 Dec 2009
18,333,897	18,333,897	\$0.25	30 April 2008
250,000	Nil	\$0.35	21 Nov 2009
250,000	Nil	\$0.41	21 Nov 2009
660,000	Nil	\$0.35	4 Sept 2010

Cash: Funds carefully conserved for drilling - \$3.1m on deposit



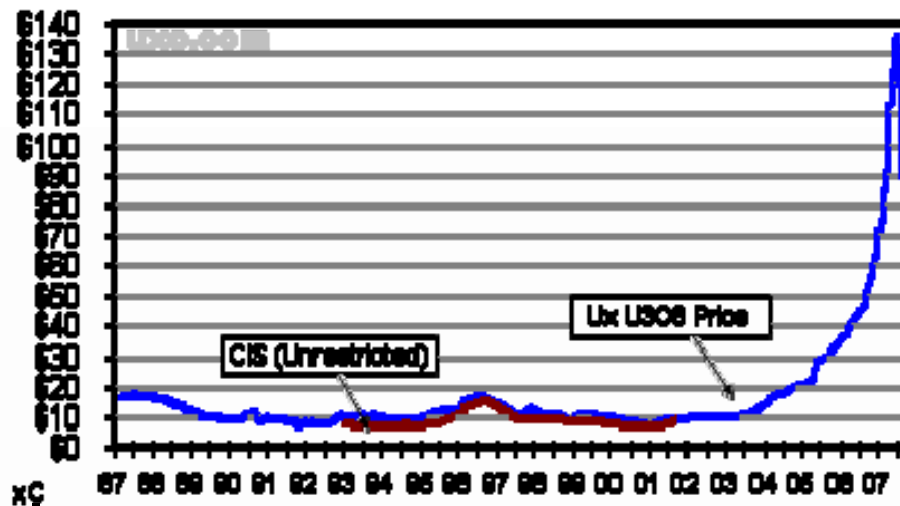
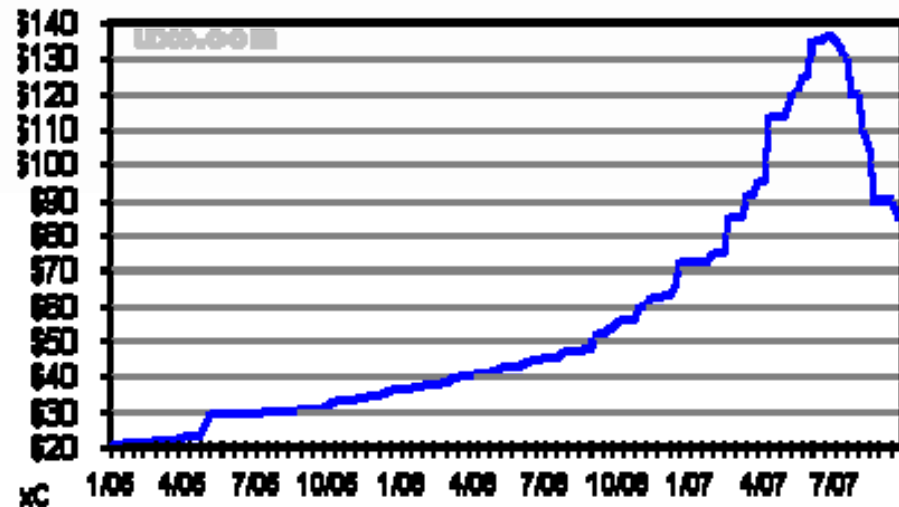
Uranium Price

Uranium Price

High: US\$135/lb – Jun07

Low: US\$75/lb – Oct07

Today: **US\$92/lb** – 5 Nov07

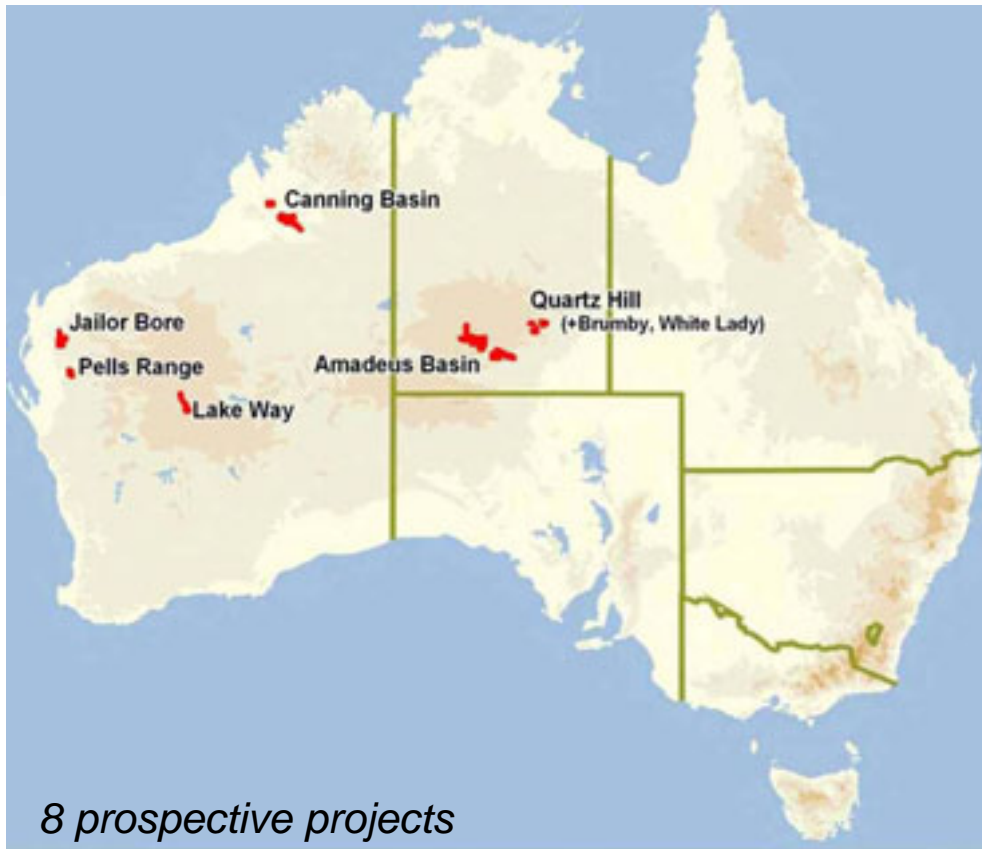


Still at historic highs

Today up **360%** on 2005 prices



Current Projects



Western Australia

- Pells Range – **high priority**
- Jailor Bore – **high priority**
- Lake Way – priority
- Canning Basin – grass roots

Northern Territory

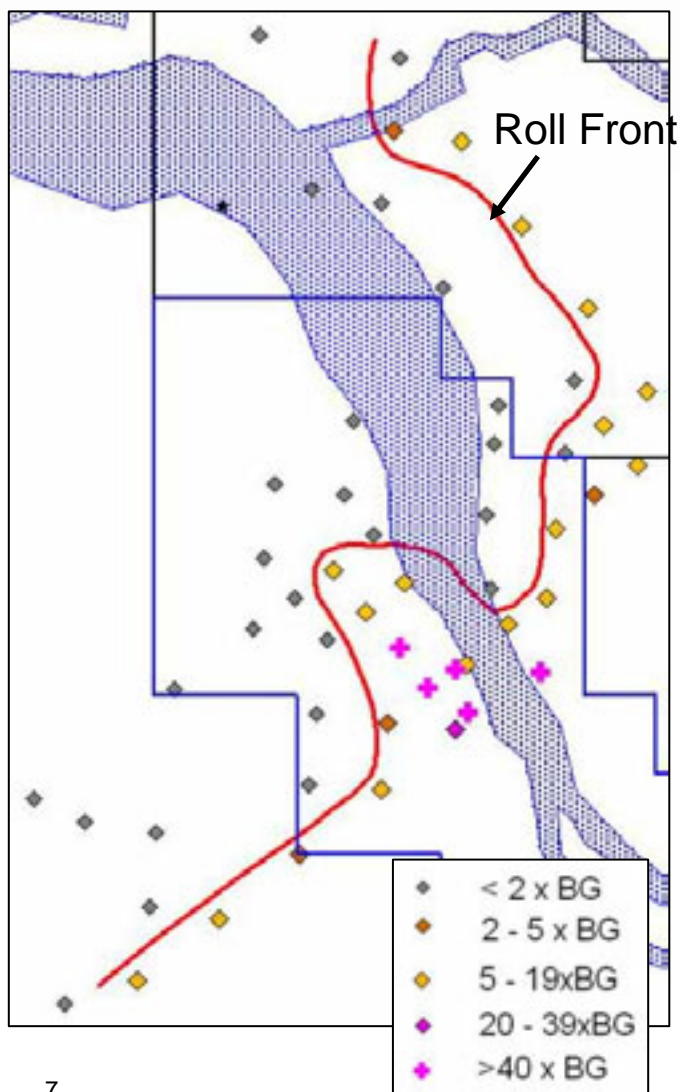
- Quartz Hill
 - Quartz Hill – **high priority**
 - White Lady – grass roots
 - Brumby – grass roots
- Amadeus Basin – grass roots

Various U mineralisation: Redox front sandstone hosted, calcrete, carbonate trap in limestones, U-REE mineralised pegmatite, possibly IOCG.

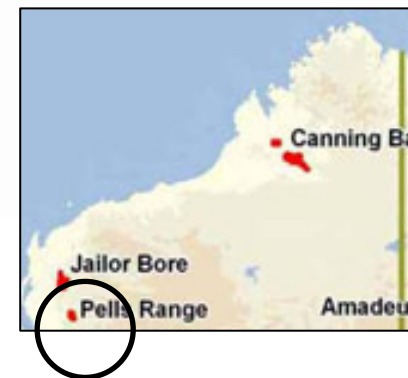
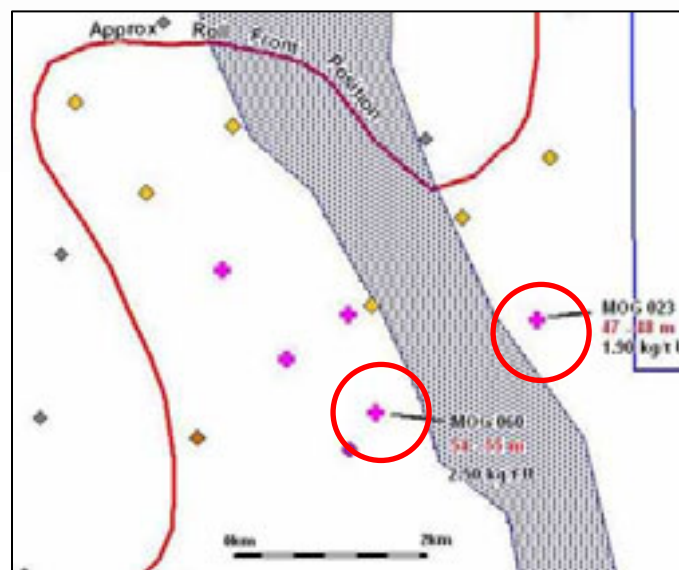


WA - Pells Range: Historic Drilling

Historic Drill Holes



Historic Results



■ High priority target

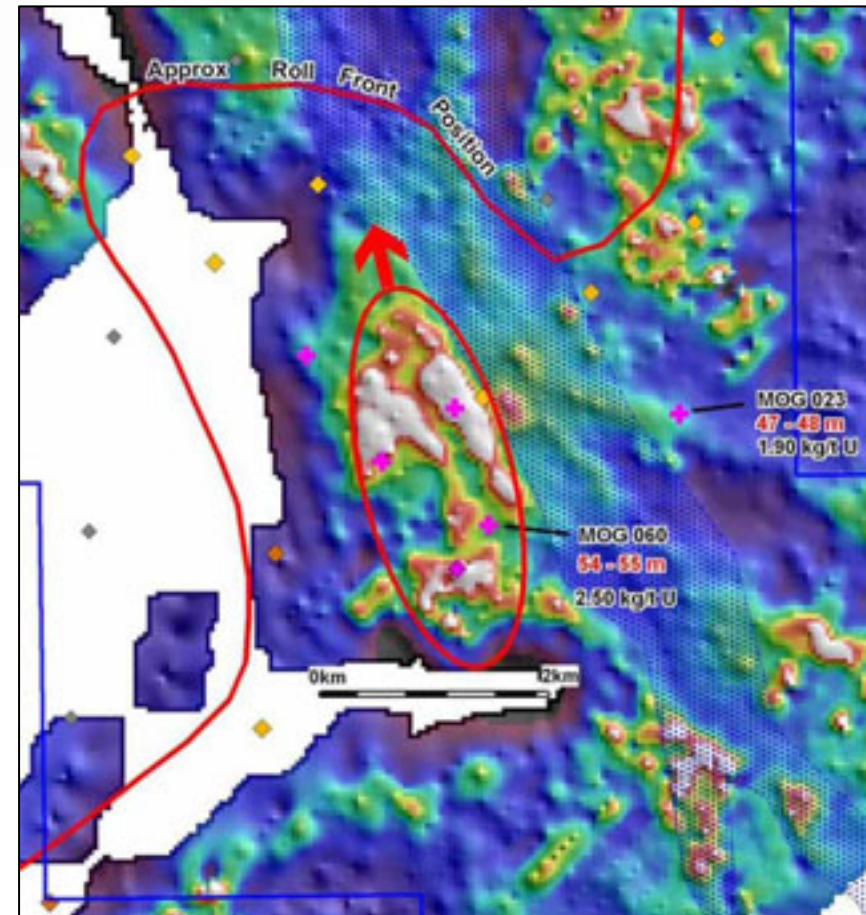
- Drilling by Afmeco Aust & Occidental Minerals in 1970s/80s identified U mineralisation
- Mineralised front: 29km+
- Results: 2.9kg/t U_3O_8 at 54m; 2.24kg/t U_3O_8 from 47m
- NRU following up on high quality work



Pells Range: EM Survey

EM Survey - March 2007

- Mineralised unit is carbonaceous and is a conductor
- Conductor is co-incident with higher-grade intercepts in historic drilling. Highly likely to contain significant U mineralisation.
- Target is **3.3km long, 1.5km wide**, at **40m depth** in south to **60m depth** in north (survey limit)
- High potential for north plunge extension

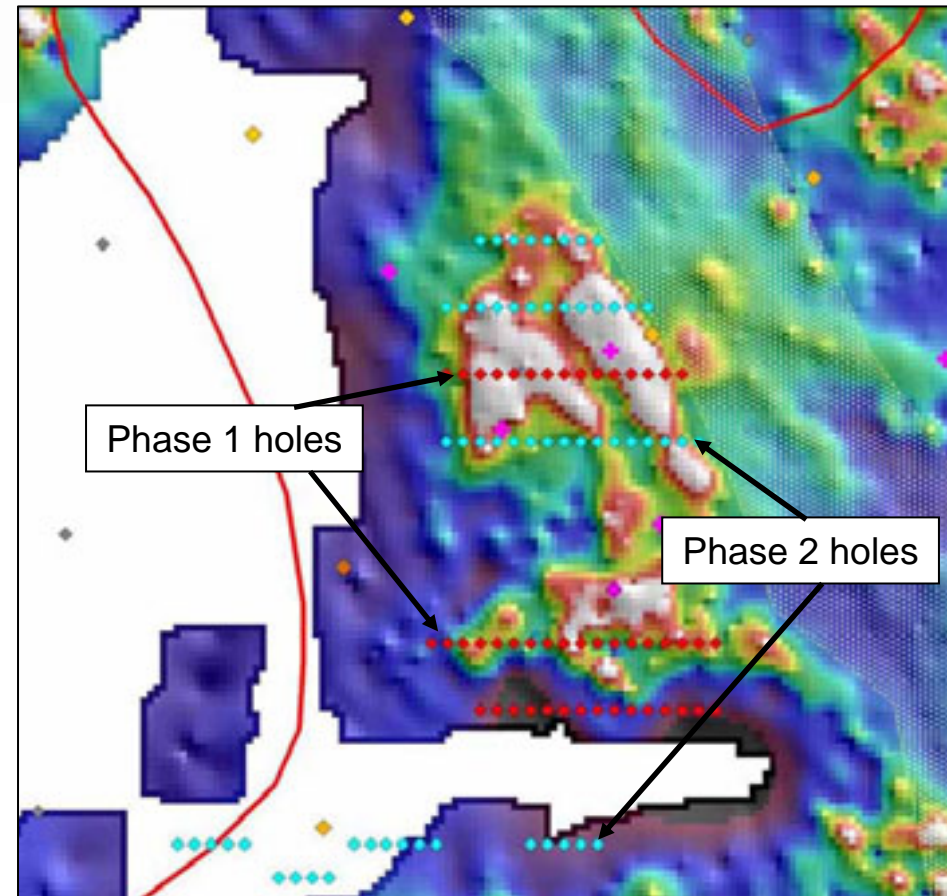


Conductivity image showing drilling target

Pells Range: Drilling Program

Drilling Program

- Permit process well advanced
- Heritage survey & DoIR approvals expected end Feb08
- Drilling soon after
- 2 drilling phases:
 - Phase 1: 3250m
 - Phase 2: 3955m (dependant on phase 1 results)



Conductivity image at 60m depth showing historic drilling, projected roll front & proposed drill holes

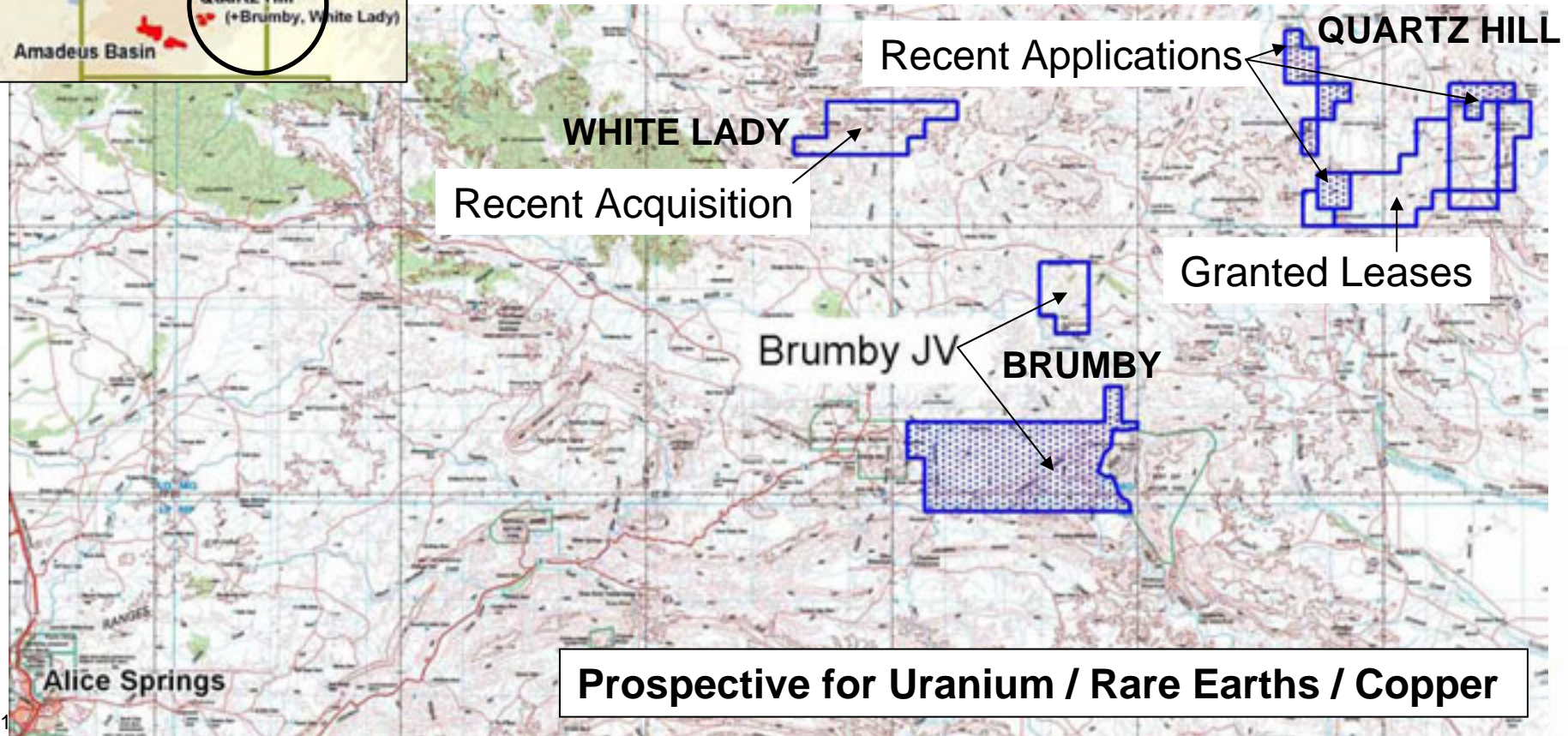


NT - Quartz Hill Project



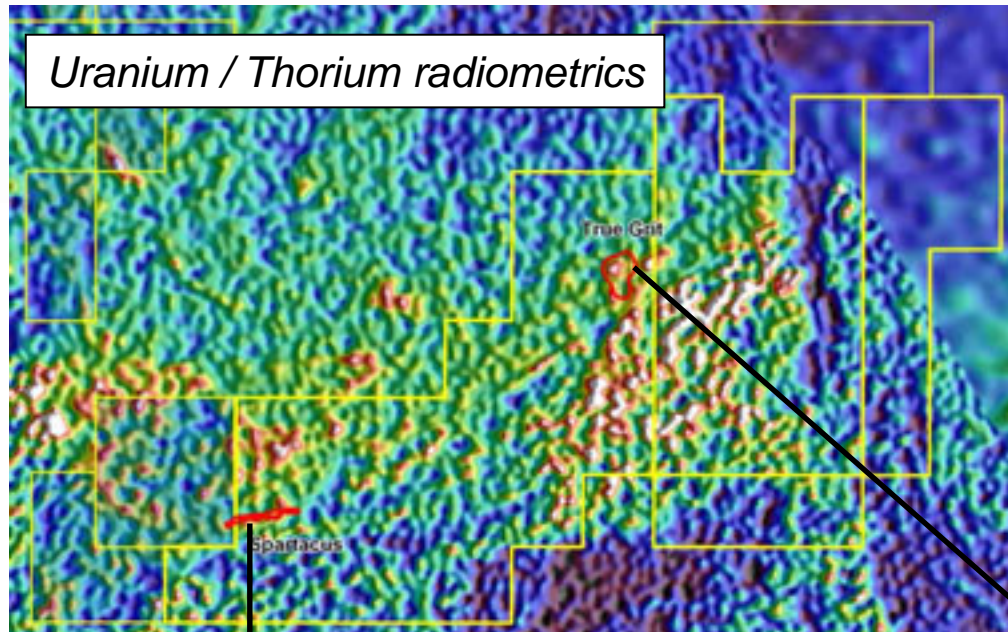
Quartz Hill Project consists of:

- Quartz Hill tenements – **high priority target**
- White Lady tenement – priority target
- Brumby tenements





Quartz Hill: U-REE Targets

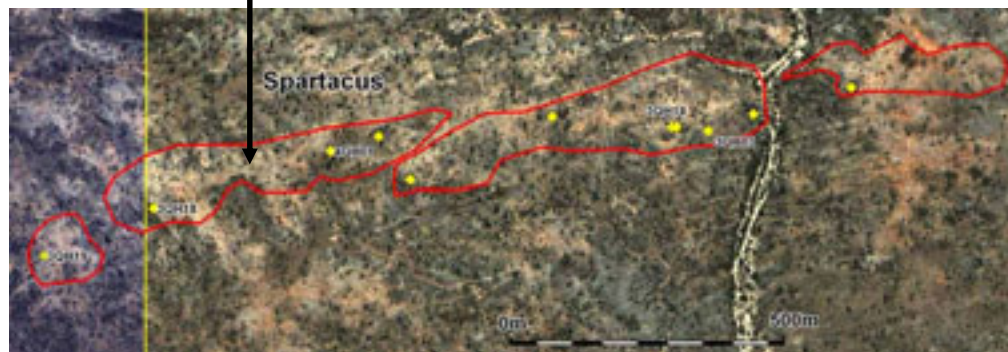


Pegmatite Targets

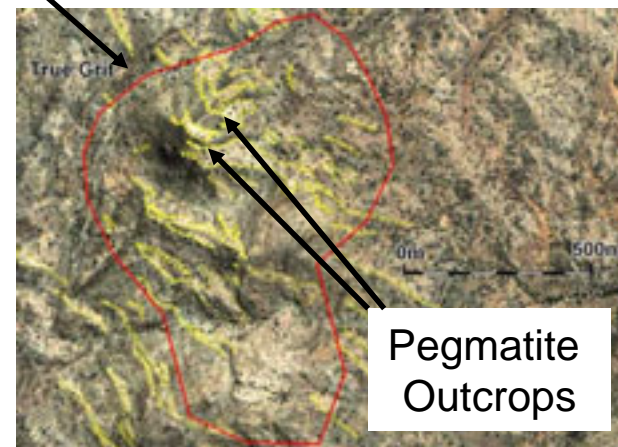
- U in Samarskite (**12.5% U**)
- Spartacus: 1.3km x 100m - **significant** scope for scale
- True Grit: also scope for scale

Rare Earth Elements

- Nb to 45%; Ta to 19%; Y to 10%
- High global REE prices



Spartacus Targets



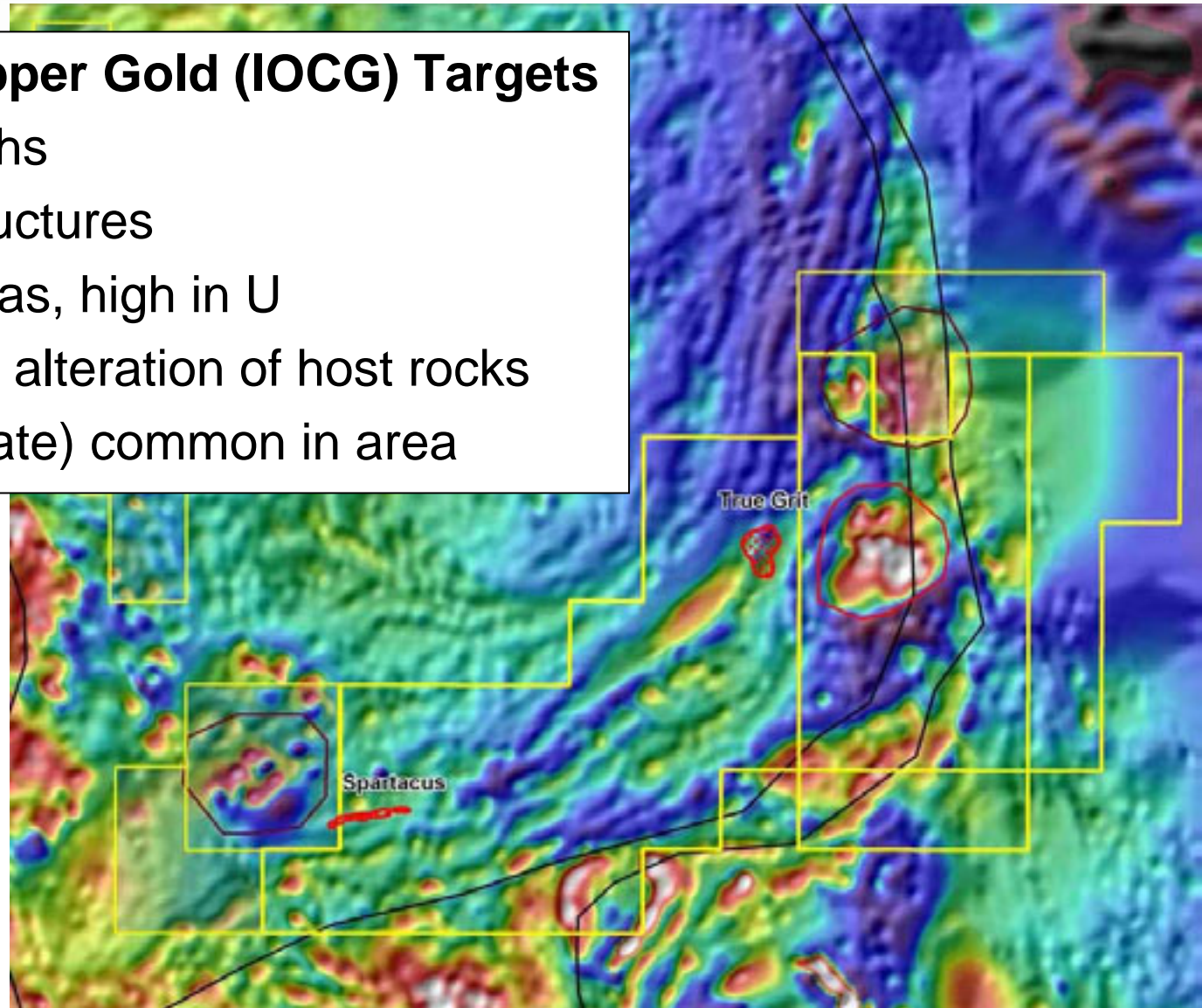
True Grit Targets

Pegmatite Outcrops

Quartz Hill: Electromagnetic Targets

Iron Oxide Copper Gold (IOCG) Targets

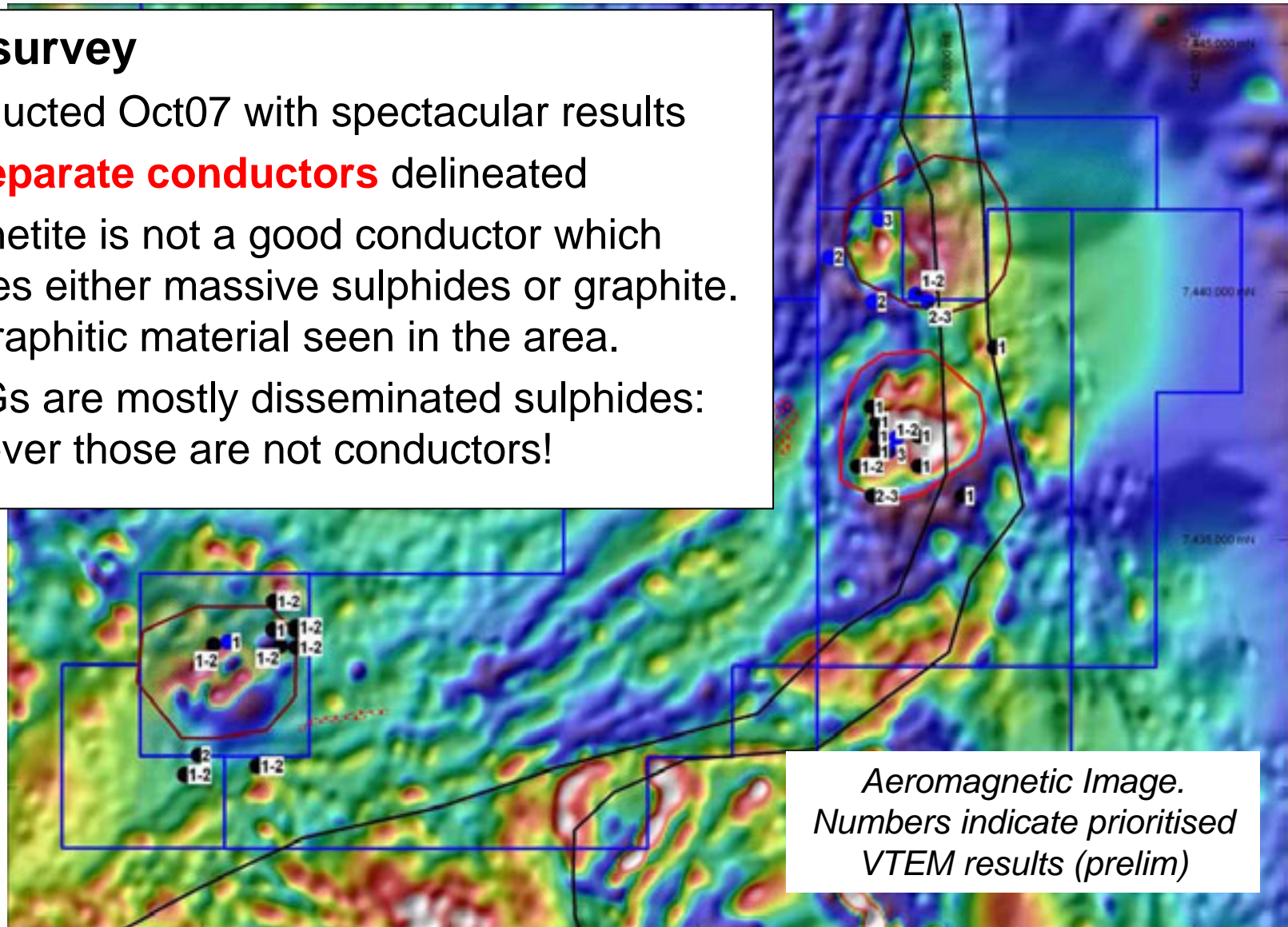
- Magnetic highs
- On major structures
- Mixed magmas, high in U
- Massive fluid alteration of host rocks
- Cu (+carbonate) common in area



Quartz Hill: VTEM Results

VTEM survey

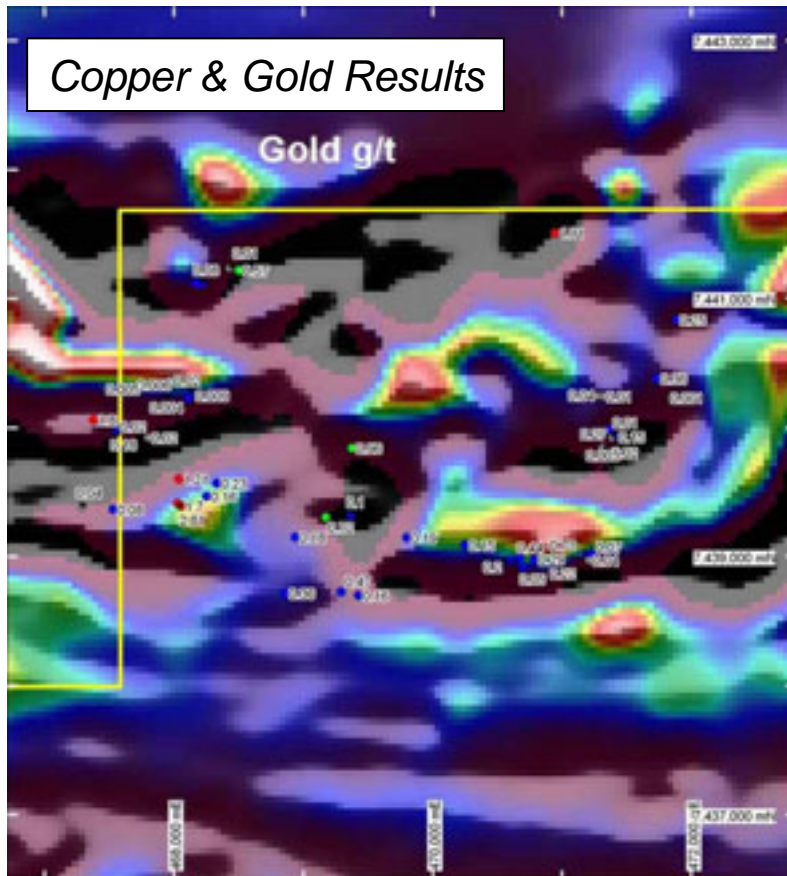
- Conducted Oct07 with spectacular results
- **25 separate conductors** delineated
- Magnetite is not a good conductor which implies either massive sulphides or graphite. No graphitic material seen in the area.
- IOCGs are mostly disseminated sulphides: however those are not conductors!



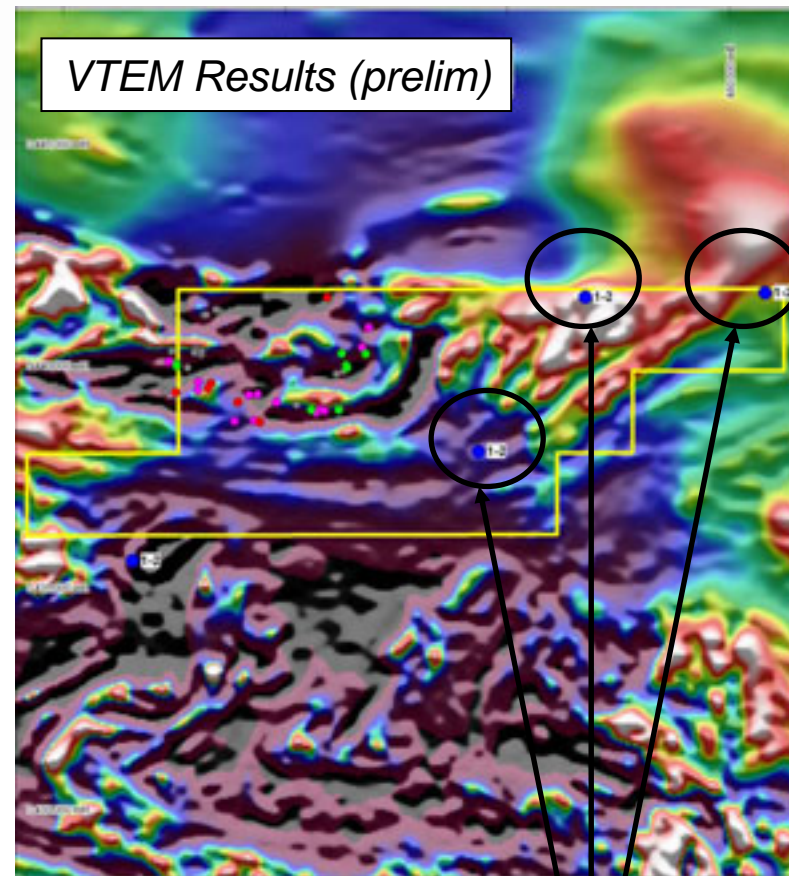


NT - White Lady: Results

Grass roots exploration



Extensive surface copper anomalism

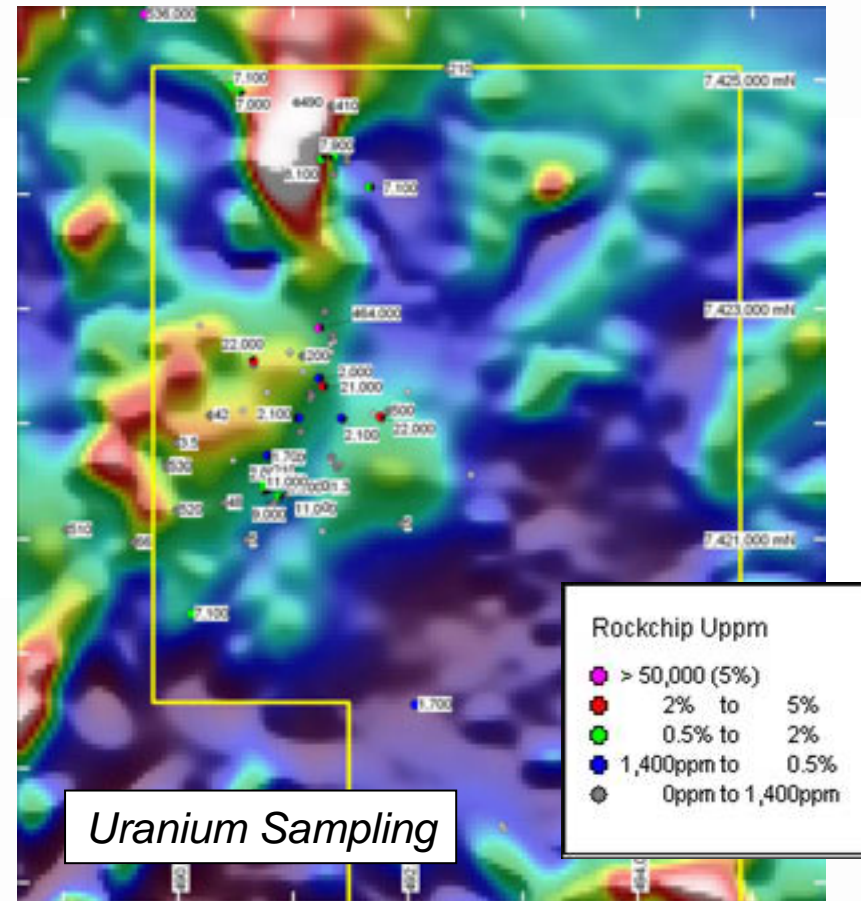
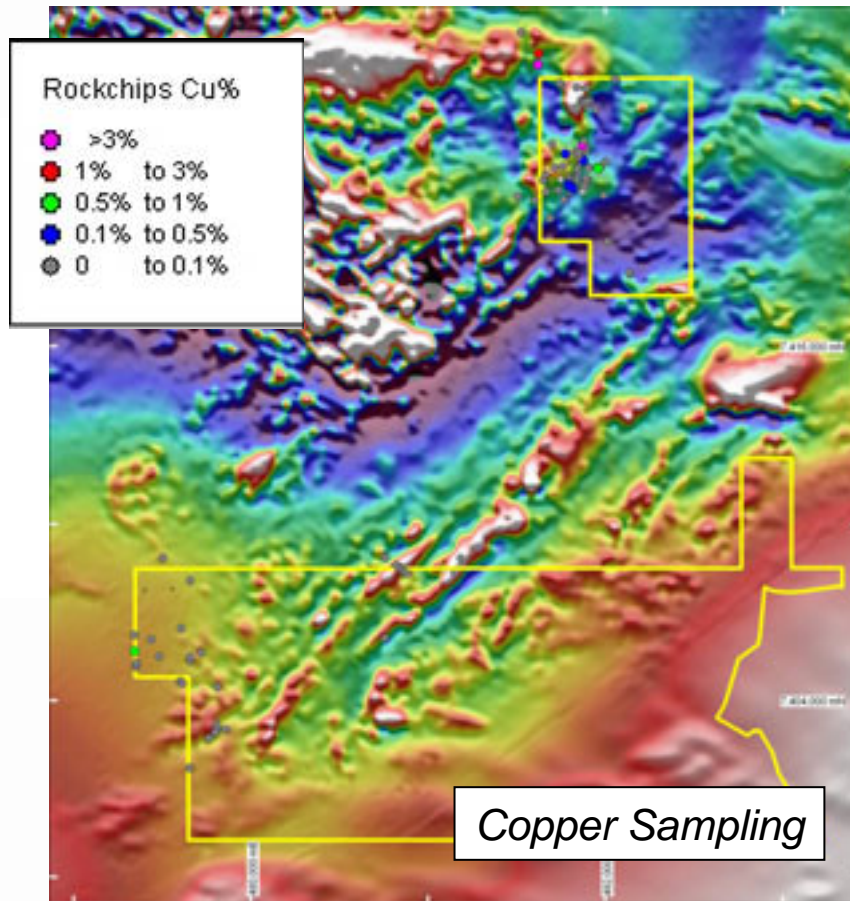


Prioritised Primary Conductors
■ Potential massive sulphides



NT – Brumby: Results

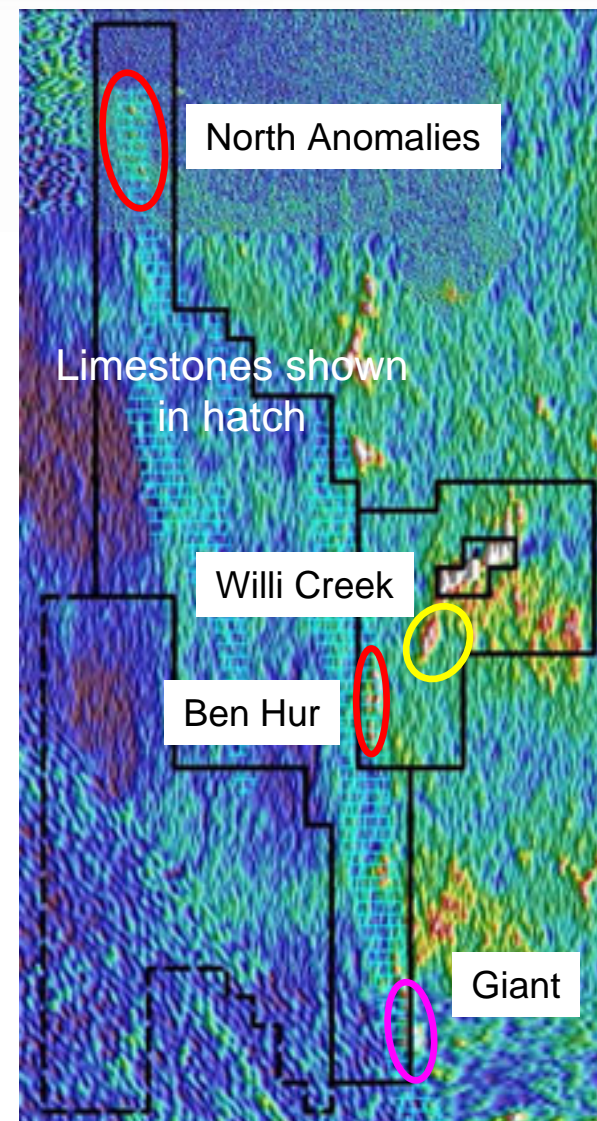
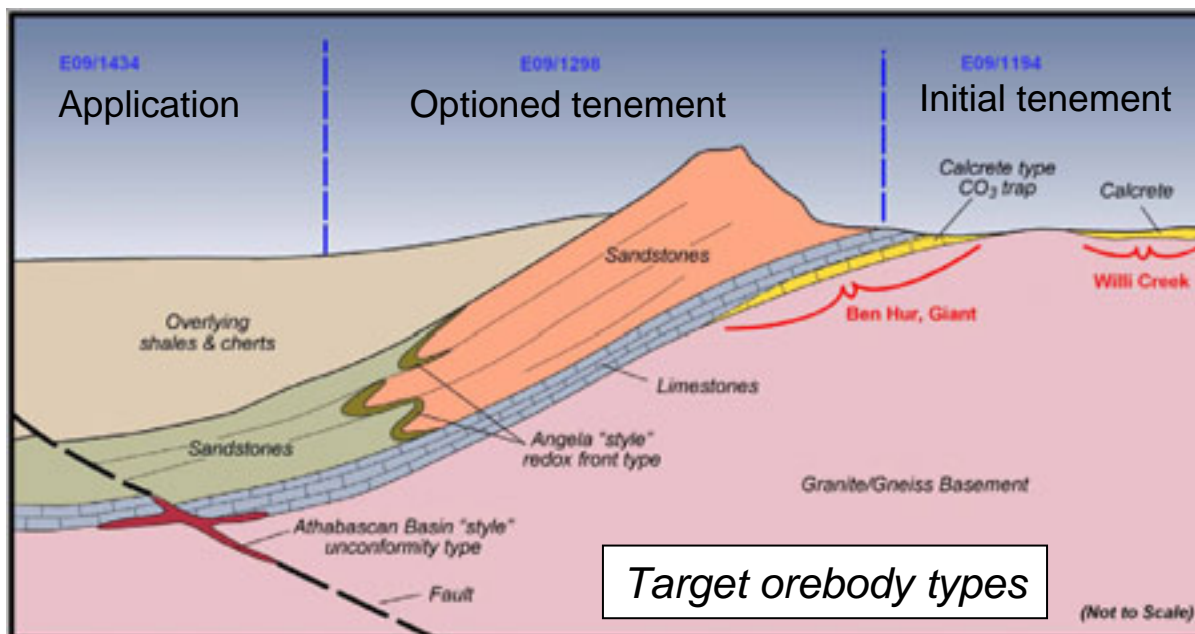
Grass roots exploration





WA - Jailor Bore: Targets

- **High priority project**
- 2 major, limestone hosted targets:
 - Ben Hur
 - Giant



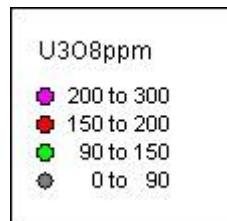
Uranium / Thorium Radiometrics



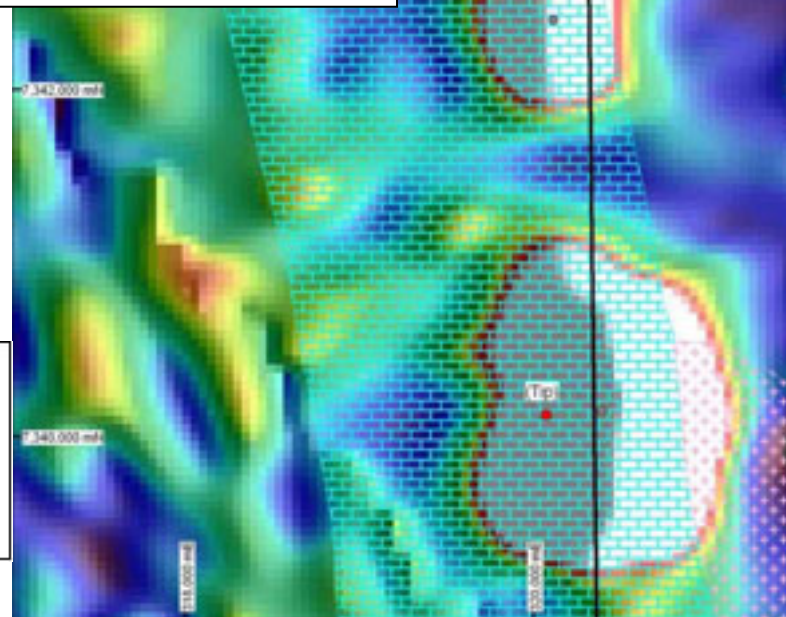
Jailor Bore: Major Targets

Major Targets: Ben Hur, Giant

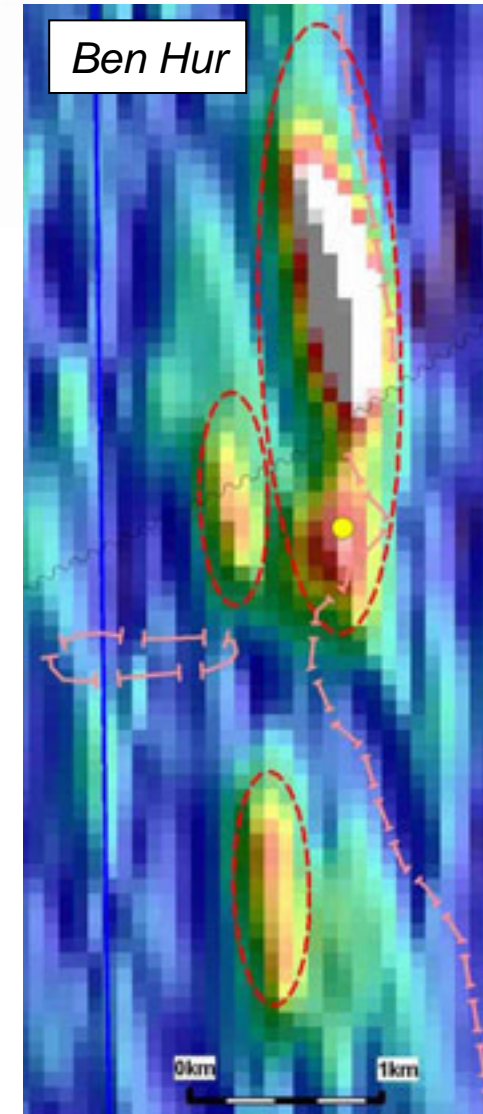
- Surface depleted but fails to mask the anomaly
- Mineralisation easily apparent at shallow depths
- Each has a strike length of 5km+



(2km grid)



Giant



Ben Hur



Jailor Bore: Exploration Strategy

E09/1194: Ben Hur & Willi Creek

- Ben Hur: Work program DoIR approved, awaiting heritage survey
- Willi Creek: Work program DoIR approved, awaiting heritage survey
- Drilling to be scheduled

E09/1298: Giant

- Work program in progress, lease awaiting heritage survey

E09/1434: Application

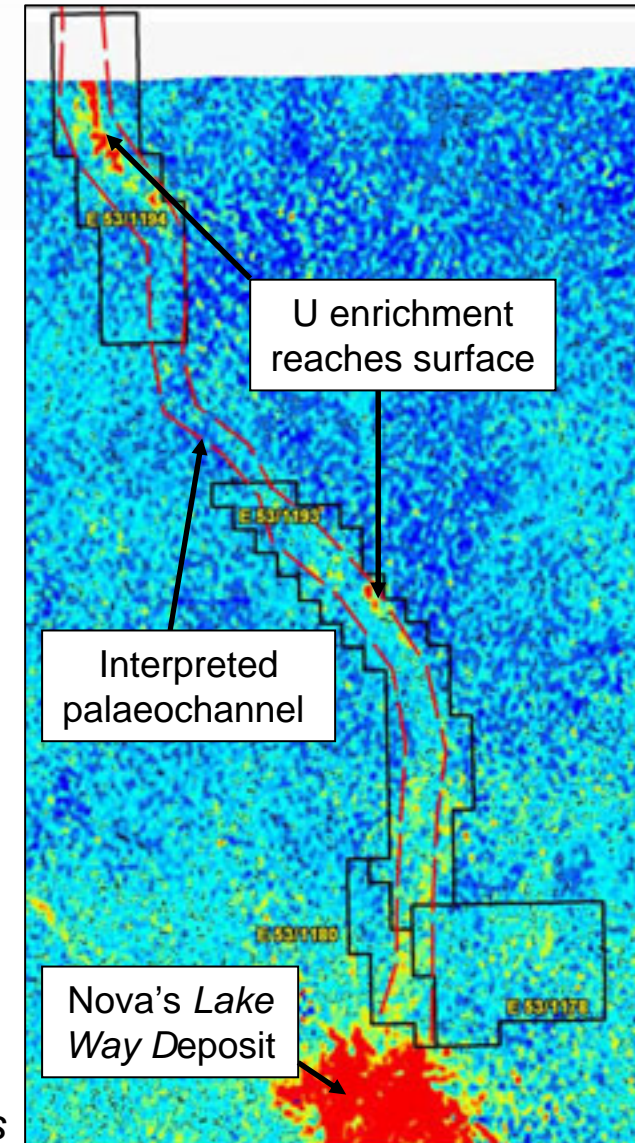
- Get lease granted (Native Title in discussion)
- Research EM methods in Athabaskan Basin Canada (VTEM?)
- Fly appropriate survey, follow-up drilling as required



WA - Lake Way Project



- Priority project
- Large land holding (475km²) in highly prospective area
- Tertiary palaeochannels prospective for shallow calcrete deposits
- Close to Nova Energy's *Lake Way* Deposit (4,600t U₃O₈) & *Yeelirrie* Deposit (52,000t U₃O₈)



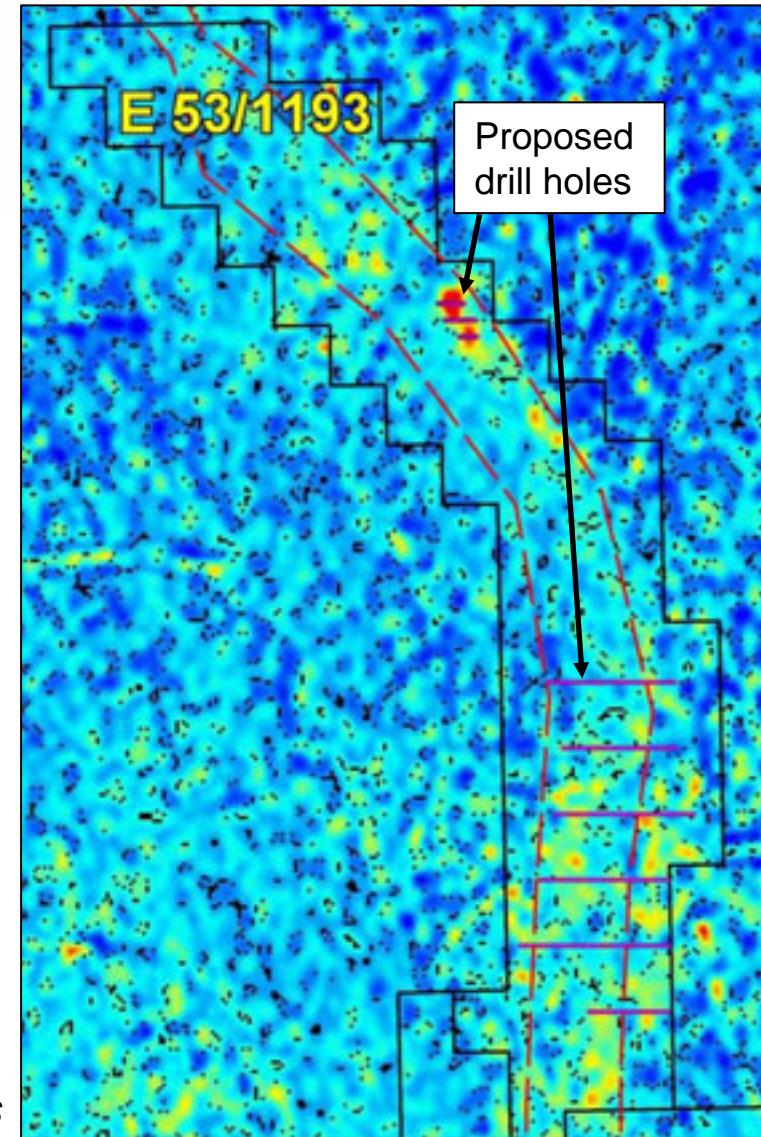
Uranium / Thorium Radiometrics



Lake Way: Drilling Program

Drilling Program

- Heritage survey completed
- Work program approved by DoIR
- 4170m aircore program;
up to 278 x 15m holes; 100m
spaced with 50m infill
- Drilling schedule to be finalised

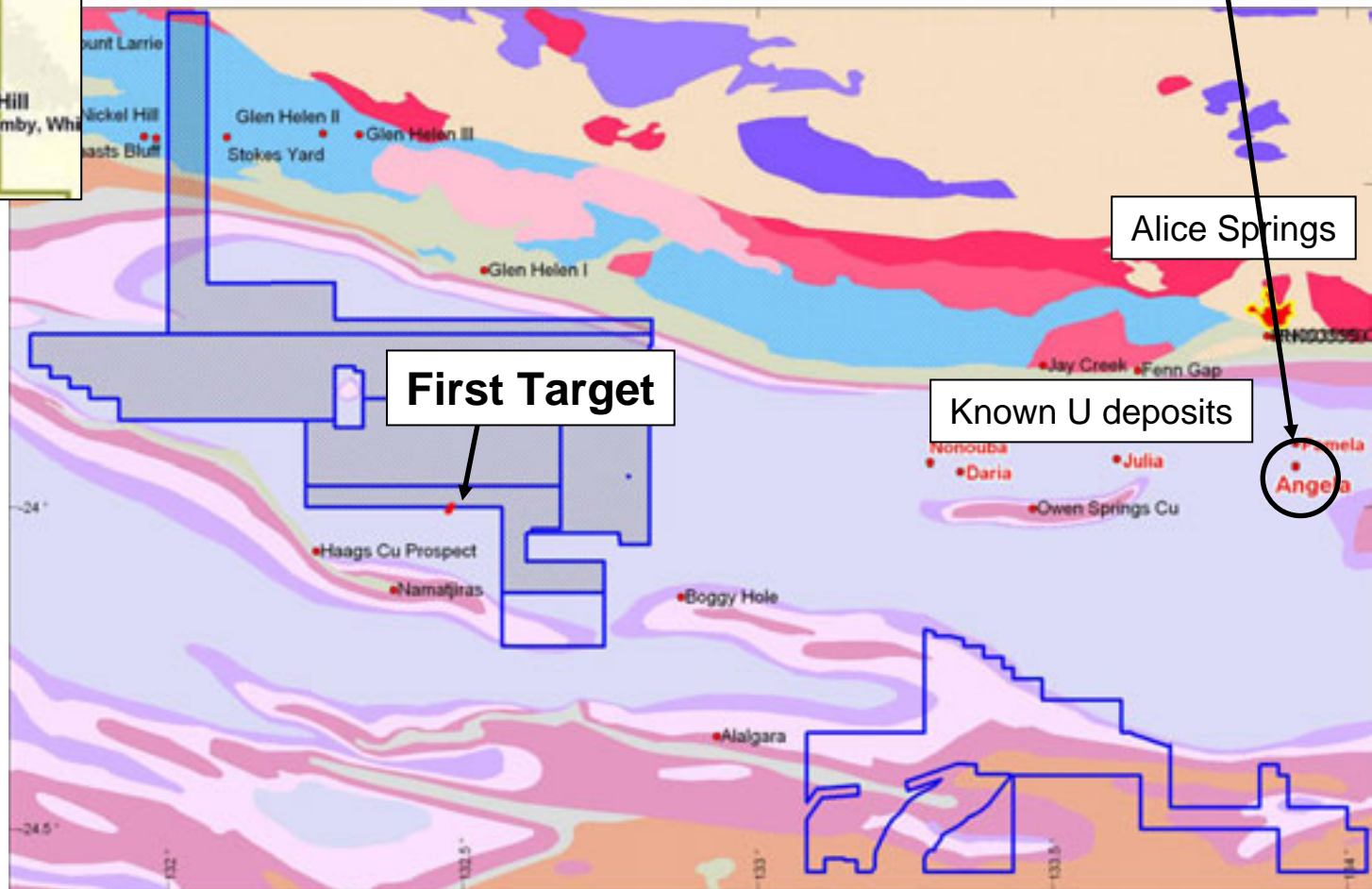




NT - Amadeus Basin Project



- Grass roots exploration
- First target anomaly at surface (Angela deposit has no surface expression – 12,000t U₃O₈)



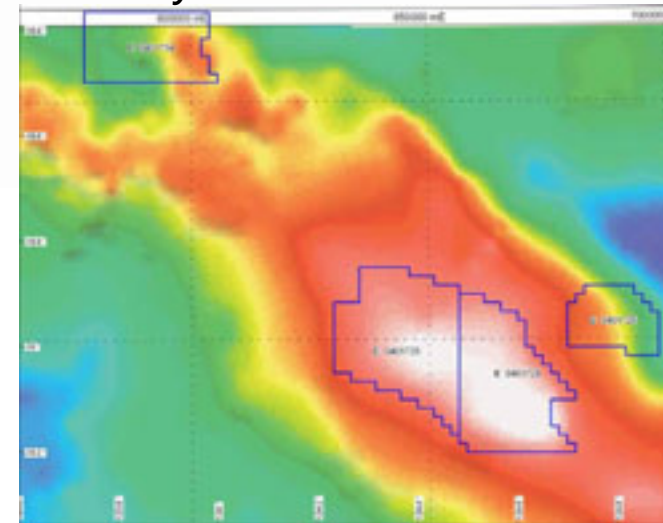


WA - Canning Basin Project

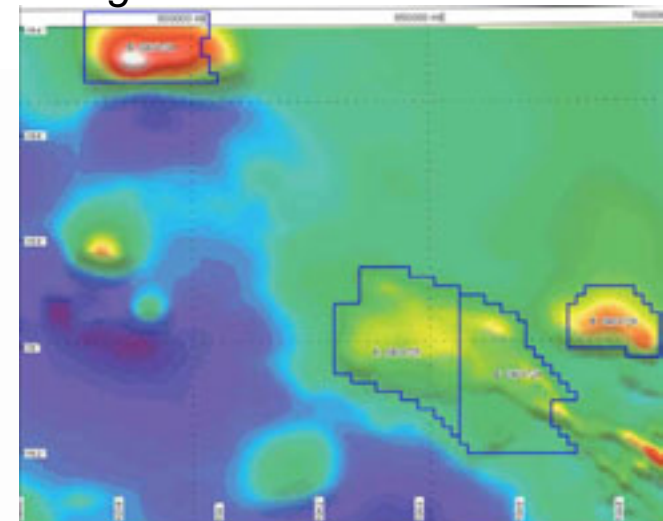


- Grass roots exploration
- Co-incident gravity & magnetic anomalies highly unusual & required for IOCG
- Such large co-incident anomalies are the type of condition in which major new deposits are found
- NRU to survey & drill to ascertain further exploration

Gravity Anomalies



Magnetic Anomalies





Next 12 months

Ready to define potentially large uranium resources within the next 12 months.

- 5 priority drilling targets
 - Pells Range
 - Quartz Hill
 - Jailor Bore: Giant & Ben Hur
 - Lake Way
- Programs ready and awaiting final regulatory approvals
- Then drilling schedule will be finalised



Contact

Martin Blakeman

Managing Director

Newera Uranium Limited

Telephone: +61 (08) 9382 3100

Email: martin@nru.com.au

Address: Suite 5/2 Centro Ave, Subiaco WA 6008

Website: www.nru.com.au

ASX Code: NRU

