



#### DIRECTORS

**Mr Martin Blakeman**  
Executive Chairman

**Mr Winton Willesee**  
Non-Executive Director

**Mr Eric de Mori**  
Non-Executive Director

#### COMPANY SECRETARY

**Mr Winton Willesee**

#### PRINCIPAL PLACE OF BUSINESS AND REGISTERED OFFICE

**Suite 5 / 2 Centro Avenue**  
**SUBIACO, WA 6008**

#### CONTACT DETAILS

**Website: [www.nru.com.au](http://www.nru.com.au)**  
**Email: [info@nru.com.au](mailto:info@nru.com.au)**

**Ph: + 61 (8) 9382 3100**  
**Fax: + 61 (8) 9382 3866**

**Postal: P.O. Box 668**  
**SUBIACO WA 6904**

#### PROJECTS (WA)

**Pells Range**  
**Jailor Bore**  
**Lake Way**

#### PROJECTS (NT)

**Quartz Hill**  
**White Lady**

**7 July 2009**

#### EXPLORATION UPDATE

In December 2008 **Newera Uranium Limited (ASX: NRU)** completed a drill program covering five individual uranium prospects located within the Jailor Bore and Pells Range project areas located within the Carnarvon Basin. Results were received in January and February of 2009 and were the subject of an ASX release in February 2009.

Since that time, Newera has undertaken a review of the uranium drilling results and identified the Giant, Relief Well and Ben Hur prospects within the Jailor Bore project area as priority targets for further uranium exploration.

Newera has also during the period, reviewed the prospectivity of all the tenements held within Newera's tenement portfolio, which has resulted in the rationalisation of the tenement portfolio with the withdrawal of five applications comprising the entire Canning Basin Project, and the withdrawal from two Fermi Pty Ltd/Newera Uranium Ltd Option Agreements. The first Option Agreement covered two tenements within the Arunta province, and the second, covered tenements within the Amadeus Basin of the Northern Territory. Combined, the Option Agreements covered nine individual tenements - four granted and five applications.

The ongoing review of two separate, previously completed Variable Time Electro Magnetic (VTEM) surveys has indicated the possibility that more detailed modelling of the data with a focus on the deeper anomalies seen in the data, may produce higher exploration priority targets.

**Jailor Bore – E09/1298:** The VTEM survey flown in 2008 over E09/1298 in the Carnarvon Basin of Western Australia, had as its primary mission, the identification of conductors which may indicate the presence of sulphidic bodies which may act as reducing agents and influence the deposition of Uranium mineralisation.

Recent rock chip sampling and drilling at the Giant, Ben Hur and Relief Well prospects has indicated that significant amounts of uranium have been flowing within the local system, leaching from Granites in the east, westward into the Carnarvon Basin. An Exploration Target of 1 Million pound's of uranium has been outlined at the Giant Prospect (NRU ASX announcement dated 23/02/09).

A more detailed analysis of the VTEM data is now being undertaken as a multi mission exercise:

1. To re-model sections of the survey in an attempt to determine if indicated near surface co-incident VTEM/Radiometric anomalies on transverse faults persist to depth;
2. to re-model a number of indicated deeper VTEM anomalies sitting in proximity to transverse faults, at or just above the unconformity, in an attempt to determine if the indicated, deeper anomalies, are real and represent valid future uranium drill targets; and
3. to re-model a number of indicted discrete VTEM anomalies for their base metals potential – particularly Copper (Cu), Lead (Pb) and Zinc (Zn).

**Note:** Much of the previous exploration near Newera's Jailor Bore Project was carried out in the 1970s and 1980s for base metal deposits in the Gneudna Formation and the Carboniferous Moogooree Limestone. Historical temporary reserves were held by various companies in areas now covered by Newera's tenements E09/1298 and E09/1194.

Between 1972 and 1975 Aquitaine Australia Minerals Pty Ltd focussed on Cu, Pb and Zn exploration around Lyndon station. They defined a zone of Pb, Zn anomalies in the carboniferous limestones on the margin of the Carnarvon Basin. In 1988-1989, Aberfoyle Resources also concentrated on Pb and Zn exploration near Moogooree and Bloodwood Well, which lies in the southern part of E 09/1298.

Throughout 1990 Arimco focussed on Pb, Zn and Barite exploration and from 1990 – 1993, Dominion Mining Ltd explored the region for Pb and Zn. These companies were quite successful in finding anomalous base metal results and noted the likelihood that smaller deposits of a Mississippi-Valley-style lead-zinc mineralisation could occur here.

Newera therefore aims to pair a full review of the open-file data with re-evaluation of a previous VTEM survey in order to expand on any anomalous results and identify new targets.

The current E09/1298 was originally taken up for its base metals potential before Newera began exploration for uranium within the tenement.

Jailor Bore EL09/1298 VTEM survey Area 1.

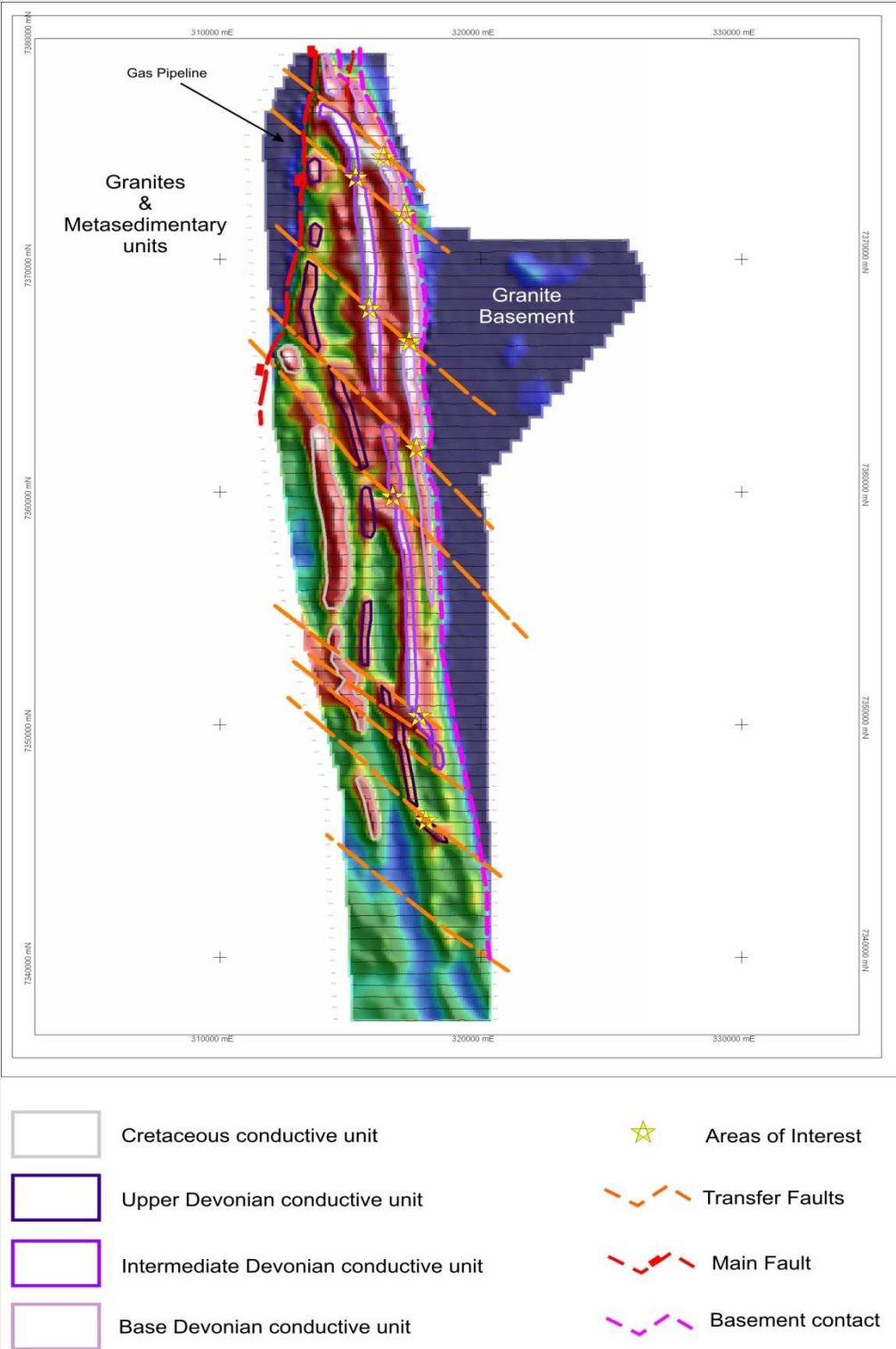


Figure 1. VTEM Channel 20 B-Field Amplitude image and 120m CDI depth slice, showing the basement contact, positions of conductive horizons, and interpreted faults.

## Jailor Bore EL09/1298 VTEM survey Area 2.

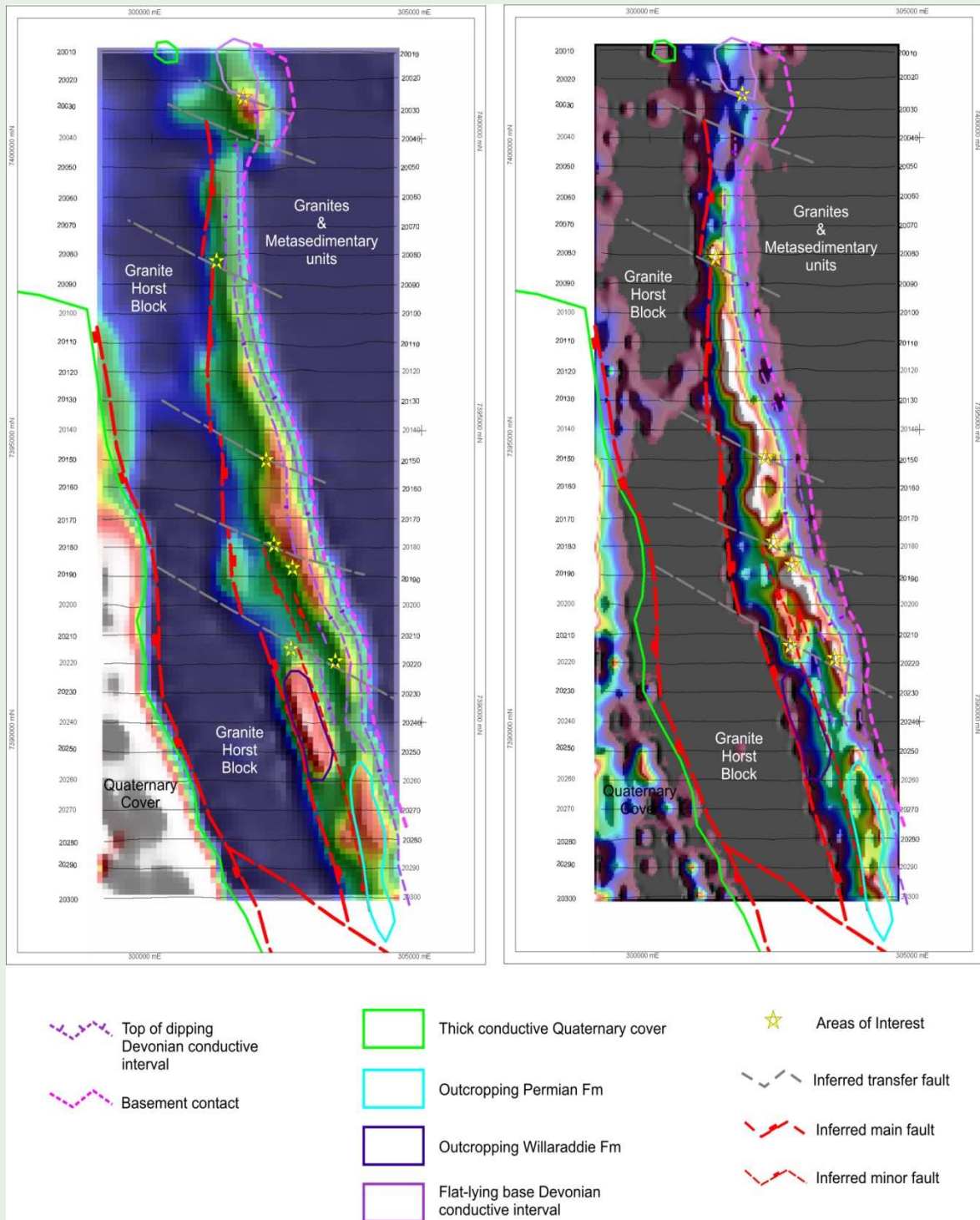


Figure 2. VTEM Channel 20 B-Field amplitude image and 120m CDI depth Slice, showing the basement contact, positions of conductive horizons, and interpreted faults.

**White Lady - EL25169:** The VTEM survey flown in 2007 over the White Lady project tenement located in the Arunta Province of the Northern Territory, had as its primary mission, the identification of conductors which may indicate the presence of sulphidic bodies, with copper as the priority target.

Previous surface exploration had produced the following rock chip results.  
(NRU ASX Release 21/06/07)

Sample Number	AU ppm PM219 0.001	CU 2ppm G001 >1%A101	Sample Number	AU ppm PM219 0.001	CU 2ppm G001 >1%A101	Sample Number	AU ppm PM219 0.001	CU 2ppm G001 >1%A101
NH-002	0.121	4.30%	K31002	2.81	21.10%	NAV-E5	0.726	5.64%
NH-003	1.08	13.20%	K31003	2.52	7.45%	NAV-F5	0.105	6.10%
RIM303	.362	10.70%	K31004	1.21	14.00%	NAV-O1	0.360	9.26%
LIZ115	1.80	7.88%	DOC-01	0.251	5.84%	NAV-P1	0.187	3.30%
LIZ129	0.089	3.58%	DOC-03	1.11	3.78%	NAV-CU-1	1.01	5.73%
KLP301	0.166	4.45%	DOC-08	0.430	4.87%	NAV-CU-2	1.54	7.79%
KLP303	0.113	4.25%	PC-703	0.19	22.50%	NAV-CU-3	0.572	7.31%
KLP304	0.231	4.79%	PC-704	4.90	9.12%	NAV-CU-4	1.07	6.04%
KLP305	0.413	4.13%	PC-901	0.522	15.70%	WL-104	0.221	5.15%
KLP306	1.39	8.16%	PC-1201	0.16	4.21%	WL-105	0.292	6.20%
			PC-1202	0.473	7.46%	WL-306	0.058	6.20%

**Table 1:** Highlight Vendor rock chip sample results from Copper showings (>3%Cu), EL25169

SAMPLE	Cu %	Au g/t	Ag g/t	Ca %	Fe %	Description
16901	1.05	0.01	0	0.39	13.35	Malachite & Fe oxide in carbonate gneiss
16902	0.70	0.06	0	0.44	15.4	Malachite & Fe oxide in carbonate gneiss
16903	1.80	0.15	0	16.75	3.88	Malachite in crystalline carbonate with magnetite
16904	8.20	0.73	14	5.05	10.75	Malachite in & on qtz-biotite gneiss; haematite
16908	4.68	0.44	1	5.21	7.25	Malachite in qtz-biotite gneiss
16910	4.44	0.96	6	2.21	9.08	Malachite in carbonate gneiss
16911	0.02	0	0	10.95	5.37	Carbonate-epidote-biotite gneiss; host to 16910
16912	6.15	1.7	13	0.19	3.93	Malachite in carbonate-epidote-biotite gneiss
16913	0.11	0	0	12.7	6.17	Carbonate-biotite-qtz gneiss; host to 16912

**Table 2:** Highlight Newera due diligence Rock chip samples of Copper showings, EL25169.



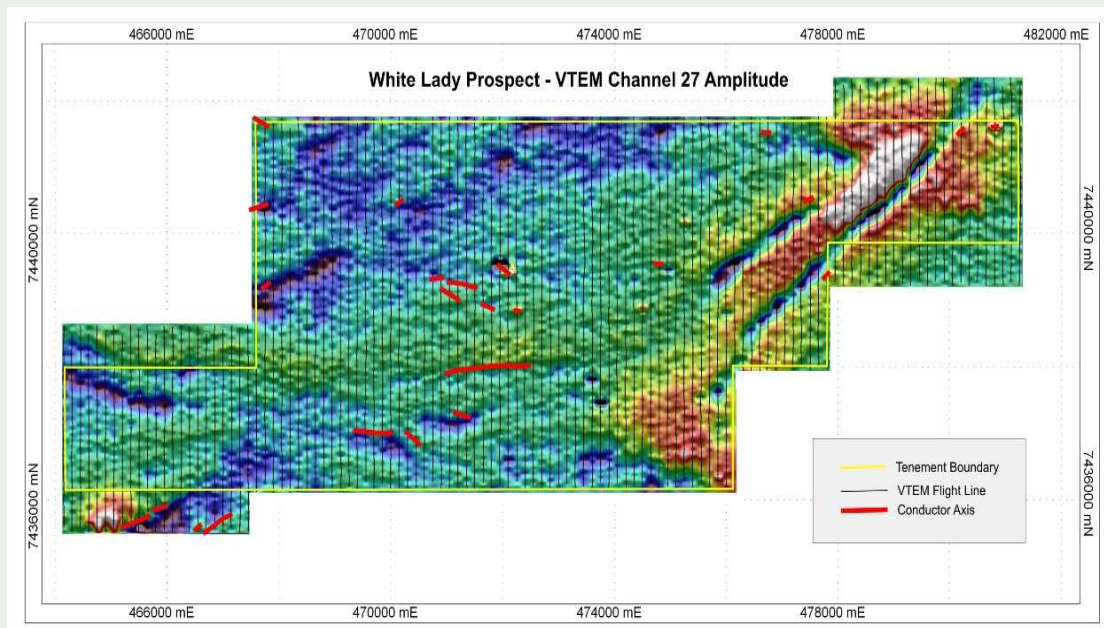
**Figure 2:** Carbonate-epidote gneiss containing Malachite at E25169, Harts Range, NT. Sample 16910 (see Table 2).

The current re-interpretation of VTEM data for EL25169, whilst at an early stage, has indicated that while there are no highly conductive targets that are more typical for large massive sulphide deposits, there are a number of moderate-weak conductors.

It should be noted that massive chalcocite (significant copper ore) is sometimes only moderately conductive, particularly if the mineralisation is matrix in form. Oxidized and more disseminated Cu sulphides are only weakly - non conductive.

Weak conductors are usually shales (graphitic and clay bearing) but could also indicate saline units, manganese or other associated mineral.

More detailed modelling of the VTEM covering the White Lady project tenement EL25169 is continuing in order to prioritise potential base metals targets.



**Figure 3. White Lady EL25169 – Channel 27 amplitude image with indicated VTEM anomalies**

## General Summary

Newera has successfully identified a one (1) million pound uranium Exploration Target at its Giant prospect and further significant Uranium Mineralisation at its Ben Hur and Relief Well prospects within the Jailor Bore project area.

**Jailor Bore:** A re – evaluation of the data of a previously flown VTEM survey at Jailor bore is currently taking place

A more detailed analysis of the VTEM data is now being undertaken as a multi mission exercise:

1. To re-model sections of the survey in an attempt to determine if indicated near surface co-incident VTEM/Radiometric anomalies on transverse faults persist to depth;
2. to re-model a number of indicated deeper VTEM anomalies sitting in proximity to transverse faults, at or just above the unconformity, in an attempt to determine if the indicated, deeper anomalies, are real and represent valid future uranium drill targets; and
3. to re-model a number of indicted discrete VTEM anomalies for their base metals potential – particularly Copper, Lead and Zinc.

**White Lady:** The VTEM survey flown in 2007 over the White Lady project tenement located in the Arunta Province of the Northern Territory, had as its primary mission, the identification of conductors which may indicate the presence of sulphidic bodies, with copper as the priority target.

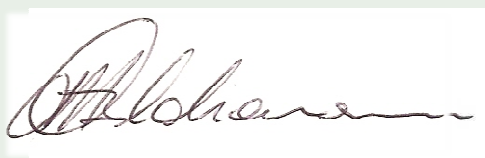
Previous surface exploration had produced significant copper and gold results from rock chip sampling.

More detailed modelling of the VTEM survey data covering the White Lady project tenement EL25169 is being undertaken in order to identify and prioritise potential base metals targets.

**Project Acquisition:** Newera continues to search for suitable projects to replace projects recently dropped or withdrawn. Target areas will have to demonstrate the potential to host significant Uranium and/or base metals mineralisation.

**Corporate:** Newera continues to search for corporate opportunities where it is felt those opportunities may be complementary and have the potential to add significant value to the Company.

For and on behalf of the Board

A handwritten signature in black ink, appearing to read 'M. A. Blakeman', is written over a white rectangular background.

M. A. Blakeman  
Managing Director

*The information in this report that relates to Exploration Results is based on information compiled by Mr Peter Anderton. Mr Anderton is privately employed and acts as a consultant to Newera Uranium Ltd. Mr Anderton is a Member of the Australasian Institute of Mining and Metallurgy (M.AusIMM). Mr Anderton has sufficient experience which is relevant to the style of mineralisation and type of deposit under consideration and to the activity which he is undertaking to qualify as a Competent Person as defined in the 2004 Edition of the "Australasian Code for Reporting of Exploration Results, Mineral Resources and Ore Reserves". Mr Anderton consents to the inclusion in the report of the matters based on his information in the form and context in which it appears.*